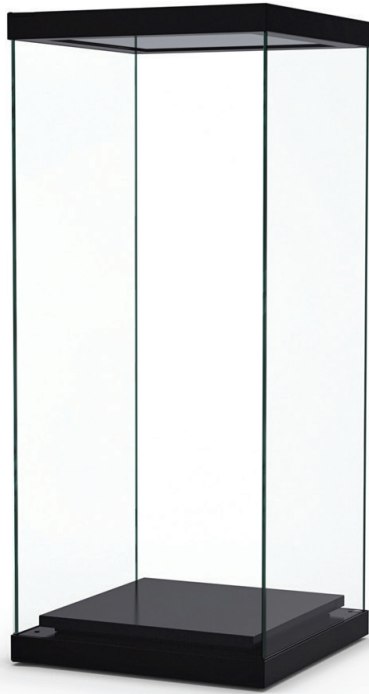


ZM-101



Modular Assembly Freestanding Case

This modular assembly freestanding case is a must-have type of case that will certainly fulfill the needs of a wide range of users, either for permanent or temporary usage.

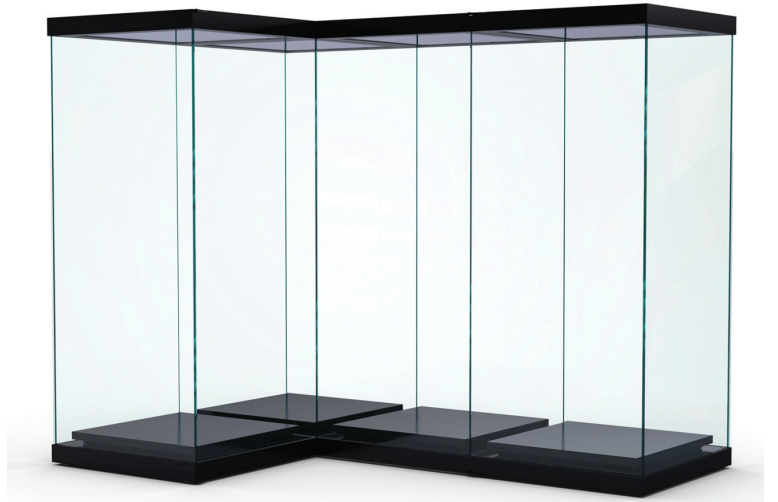
As a single unit, this case often serves to preserve and display mannequins, gowns, furniture and other freestanding tall size objects. Its optional removable shelving system is a great feature to display smaller objects. Customized plinths and risers can also be a wonderful addition.

Each case is supplied with a hinged door for easy access, which could be located on either side of the case for increased flexibility. The acquisition of specialized dollies can allow you to move the assembled case within the galleries. Storage solutions are also offered, such as reusable crates and rolling carts.

Specs

Dimensions	24"W X 24"D X 84"H 30"W X 30"D X 84"H 36"W X 36"D X 84"H 48"W X 30"D X 84"H Other	Desiccant compartment	None Within base behind door
Glazing	Regular tempered glass Regular UV laminated glass Low-iron UV laminated glass Anti-glare UV laminated glass	Powder-coating colors	Black Light gray Anodized silver Charcoal gray White
Opening System	Hinged door(s)	Lighting	LED projectors
Locking Mechanism	Abloy high-security cam lock(s)	Other options	Union assembly kits Shelving system

ZM-101



Modular Assembly Freestanding Case Multi-Axis Configuration

The ZM-101 modular case includes a powder-coated steel base and top frame, and four glass panels. The desiccant compartment is located within the base, behind the door. A removable solid back panel can be a great addition and convert this case into a wall unit. Our modular cases are also offered with optional and removable light attic with LED projectors.

Optional union kits will allow you to achieve linear assemblies, in corners or in blocks. The central panels will be removed to create larger exhibition chambers, while maintaining airtightness. The strategic location of the doors will provide easy and convenient access for maintenance or rotation of your collections.

The assembly, use and dismantling of these cases are easy enough so that your own staff can install, arrange and store the cases. An assembly guide will be provided, along with the necessary tools, if required. This is, without a doubt, the most profitable and versatile climate-controlled case that you can acquire.