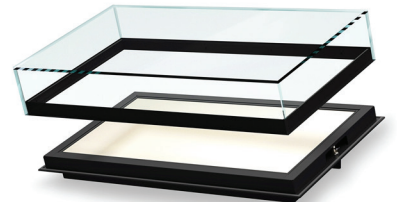
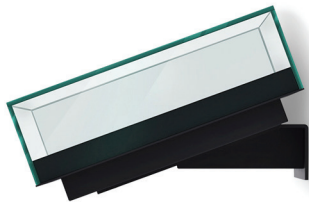
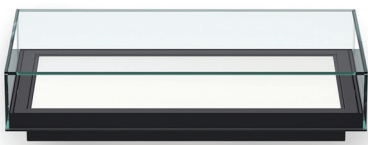
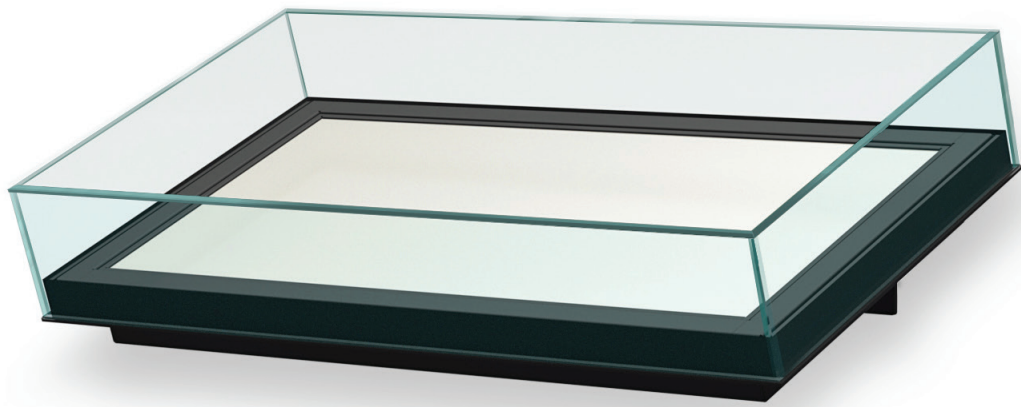


ZW-100



Wall Mounted Table-Style Case

This wall table case, unique and economical, is designed to be mounted to any wall with special anchoring, designed and fitted to your needs.

This thin table-style wall case is the perfect solution for low profile objects such as weapons, maces, documents and archives.

It will highlight your artifacts while providing a dust-free environment with a manual opening of the glass top.

A blend of wood and steel is available and can provide an interesting aesthetical look with the ability to custom match its colors with your decor.

Specs

Dimensions	Custom	Locking Mechanism	Abloy high-security cam lock(s)
Glazing	Regular tempered glass Regular UV laminated glass Low-iron UV laminated glass Anti-glare UV laminated glass	Desiccant compartment	None Underneath the base
Glass bonnet	6 to 10 inches in height	Powder-coating colors	Black Light gray Anodized silver Charcoal gray White
Opening System	Manual opening with suction cups		